



# ISPA

## Institute of Science and Public Affairs

*Bringing Together University Resources  
to Solve Critical Problems*

FSU

## HISTORY AND MISSION

*Since 1978, the Institute of Science and Public Affairs (ISPA) has served as the gateway to university resources and expertise for government agencies and private organizations.*

Through its component centers and institutes, ISPA is able to identify and to respond effectively and efficiently to some of our most critical environmental, social, and economic problems, whether local, regional, statewide, national, or global.

Both undergraduate and graduate students are an integral part of every aspect of ISPA. They gain experience in both research and technology, learn to work as members of a team, and explore options for their future. Many of the centers and institutes provide opportunities for student internships within the university as well as elsewhere in the United States and abroad.

ISPA and its component centers and institutes employ over 150 people, including 65 faculty members. In FY 2005-06, they were awarded over 200 contracts and grants amounting to more than \$18.7 million, including \$6.5 million in federal awards.

Through a variety of contracts, ISPA maintains a broad array of data resources available for public use. It also offers an extensive set of services for use in responding to critical social, environmental, governmental, education and training, and economic issues.





## SCOPE OF THE INSTITUTE

### *Social Issues*

Each year the **Center for Prevention and Early Intervention Policy (CPEIP)** positively impacts the lives of thousands of children, parents and caregivers. The CPEIP partners with local, state and federal agencies to develop policies and implement practices that promote maternal and child health.



**The Florida Center for Prevention Research (FCPR)** is primarily concerned with substance abuse prevention and health issues. The FCPR has partnered with the School of Social Work and the College of Communication to study behavioral norms on the FSU campus and to develop a social norms marketing campaign to reduce high-risk drinking and alcohol abuse.

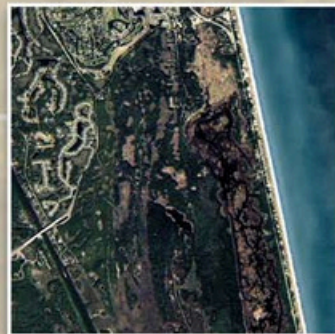


Established in 2001, the **Center for the Advancement of Human Rights (CAHR)** develops and promotes human-rights related courses, conducts workshops on human trafficking, co-sponsors the Human Rights Film Festival with the FSU Amnesty International Chapter, and places students in internships in human rights organizations around the world.

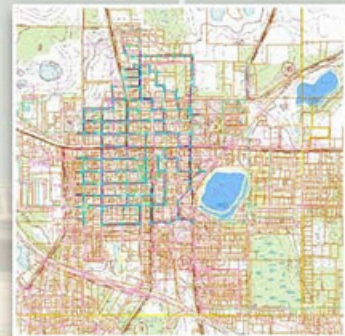
## The Environment

The natural environment is the focus of several of the centers and institutes within ISPA. The predecessor of ISPA, the **Florida Resources and Environmental Analysis Center (FREAC)**, was founded to conduct research in the general areas of resource management and environmental analysis. Geographic Information System (GIS) development, spatial database maintenance, web based database delivery, and graphic representation of geographic information are FREAC strengths.

The **Florida Natural Areas Inventory Program (FNAI)** within FREAC collects, interprets and disseminates ecological information critical to the conservation of Florida's biological diversity. FNAI provides scientific support for the Florida Forever land acquisition program. Databases are maintained for conservation lands, invasive plants, and the Florida Forever land acquisitions.







## Government

Through its five affiliate programs (UF, USF, UCF, FAU, FGCU), the **Institute of Government (IOG)** serves governments and communities in Florida through applied research, training, technical assistance and public service. Former governor Reubin O'D Askew is a senior fellow at the Institute. IOG partners with the **Florida Resources and Environmental Analysis Center (FREAC)** to bring critical GIS technology to small communities in Florida. The IOG also coordinates a number of statewide conferences for government organizations, including the annual meeting of the Florida Association of County Clerks.

The **Florida Conflict Resolution Consortium (FCRC)** was established by the legislature "to serve as a neutral resource to assist citizens and public and private interests in Florida to seek cost-effective solutions to public disputes and problems through the use of alternative dispute resolution and consensus building."

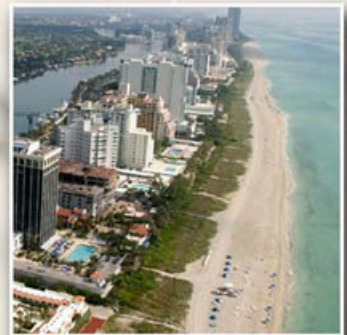
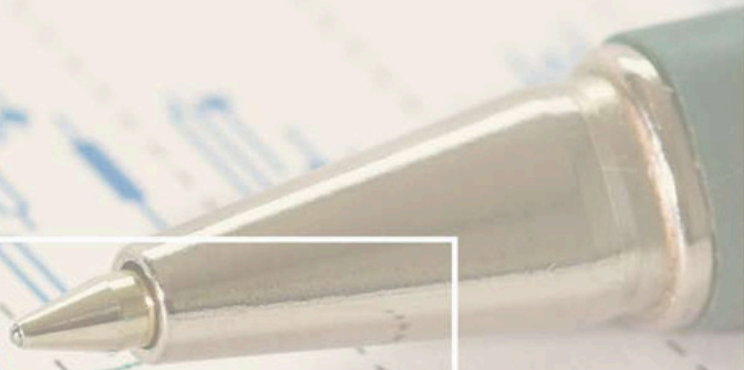


## Education & Training

Although all the centers and institutes within ISPA provide some degree of education, training and technical assistance, the **Center for Information Management and Educational Services (CIMES)** specializes in information management and assessment.

Also within ISPA is the **Florida Geographic Alliance (FGA)**, funded by Mel C. and Dot Costin Magidson and the National Geographic Fund. The Alliance shares the mission of the National Geographic Society to foster innovation in geographic education in pre-K through 12th grade.





## Economic Analysis

The **Center for Economic Forecasting and Analysis (CEFA)** assists state, local and federal governments as well as the private sector in examining and understanding the economic implications of various public policies and proposals primarily in the areas of transportation, healthcare, tourism, agriculture and the environment. The Center is collaborating with the **Florida Conflict Resolution Consortium** on Coastal issues and Education.





## DATA RESOURCES

### Land Boundary Information System (LABINS)

[www.labins.org](http://www.labins.org)

Funded by the Florida Department of Environmental Protection and housed in FREAC, LABINS is one of the largest collections of downloadable survey and mapping data available on the web today.



### Florida Public Lands Inventory

[floridapli.net](http://floridapli.net)

Is an inventory of all public lands in Florida produced annually under contract with the Department of Environmental Protection using the ad valorem tax roll databases.



### Florida National Areas Inventory (FNAI)

[www.fnai.org](http://www.fnai.org)

FNAI maintains a comprehensive GIS database on conservation lands, rare and endangered plants, and invasive species for mapping and analysis,



### Climate Data

[climatecenter.fsu.edu/climate-data-access-tools](http://climatecenter.fsu.edu/climate-data-access-tools)

Former center archives of monthly precipitation data from selected cities in Florida and local climatological data reports published by the National Climate Data Center.





## ISPA CENTERS AND INSTITUTES

Florida Resources and  
Environmental Analysis Center  
(FREAC)

C6140 University Center  
Tallahassee, FL 32306-2641

850-644-2007  
fax 850-644-7360

[freac.fsu.edu](http://freac.fsu.edu)

Center for Economic  
Forecasting and Analysis (CEFA)  
3200 Commonwealth Blvd

Suite D  
Tallahassee, FL 32306-2770

850-644-7357  
fax 850-576-2207

[cefa.fsu.edu](http://cefa.fsu.edu)

Center for Information,  
Management &  
Educational Services (CITES)

210A Sliger Building  
2035 E. Paul Dirac Drive  
Tallahassee, FL 32310-3700

850-644-0820  
fax 850-644-8257

[cimes.fsu.edu](http://cimes.fsu.edu)

FSU Survey Foundry (FSUSF)  
C6140 University Center  
Tallahassee, FL 32306-2641

888-585-4933  
fax 850-644-7360  
[surveyfoundry.fsu.edu](http://surveyfoundry.fsu.edu)

Center for the Advancement of  
Human Rights (CAHR)

425 W. Jefferson St.  
Tallahassee, FL 32301

850-644-4550  
fax 644-4633

[cahr.fsu.edu](http://cahr.fsu.edu)

Institute of Academic  
Leadership (IAL)

116 Westcott  
P.O. Box 3061310  
Tallahassee, FL 32306-1310

850-644-4705  
fax 850-644-0172

[ial.fsu.edu](http://ial.fsu.edu)

Center for Prevention and  
Early Intervention Policy  
(CPEIP)

1339E. Laying St.  
Tallahassee, FL 32301

850-922-1300  
fax 850-922-1352

[cpeip.fsu.edu](http://cpeip.fsu.edu)

Florida Conflict Resolution  
Consortium (FCRC)

C6140 University Center  
Tallahassee, FL 32306-2641

850-644-2007  
fax 850-644-7360  
[consensus.fsu.edu](http://consensus.fsu.edu)

Florida Center for Prevention  
Research (FCPR)

800 Capital Circle SE  
Tallahassee, FL 32310-3700

850-645-5421  
fax 850-644-7360

[fcpr.fsu.edu](http://fcpr.fsu.edu)

The John Scott Dailey Institute  
of Government (IOG)

3200 Commonwealth Blvd  
Suite B  
Tallahassee, FL 32306-2770

850-487-1870  
fax 850-487-0041

[iog.fsu.edu](http://iog.fsu.edu)



Institute of Science and  
Public Affairs

Suite 6140, Building C, University Center  
Tallahassee, Florida 32306-2641  
850-644-2007 fax 850-644-7360  
[ispa.fsu.edu](http://ispa.fsu.edu)