

*INSTITUTE OF SCIENCE AND PUBLIC AFFAIRS*

I  
S  
P  
A

*Director's Report*



# *Presentation*

- ❖ Overview of each Institute
- ❖ Assessment of their Impact
- ❖ Perspectives on the Future



# *OVERVIEW*

Origins

Development

Mission

Activities

Issue Areas

ISPA

IOG

IICER



# *REPORTING ENTITIES*

- ❖ Institute of Government (IOG)
- ❖ Institute for International Cooperative Environmental Research (IICER)
- ❖ Institute of Science and Public Affairs (ISPA)



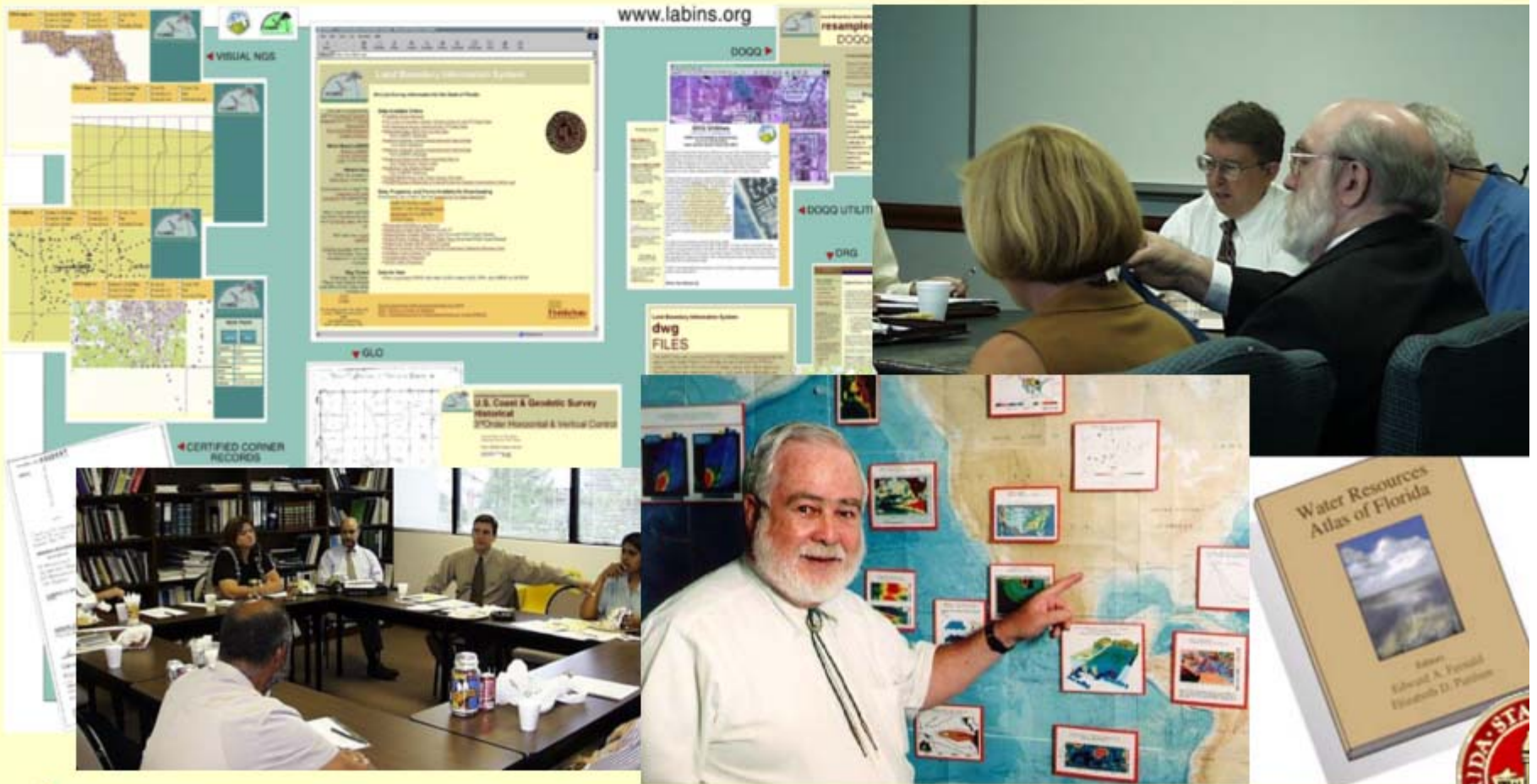
## *APPLIED RESEARCH AND PUBLIC SERVICE*

- ❖ Training
- ❖ Research and Development
- ❖ Technical Assistance
- ❖ Collection and Dissemination
- ❖ Publications

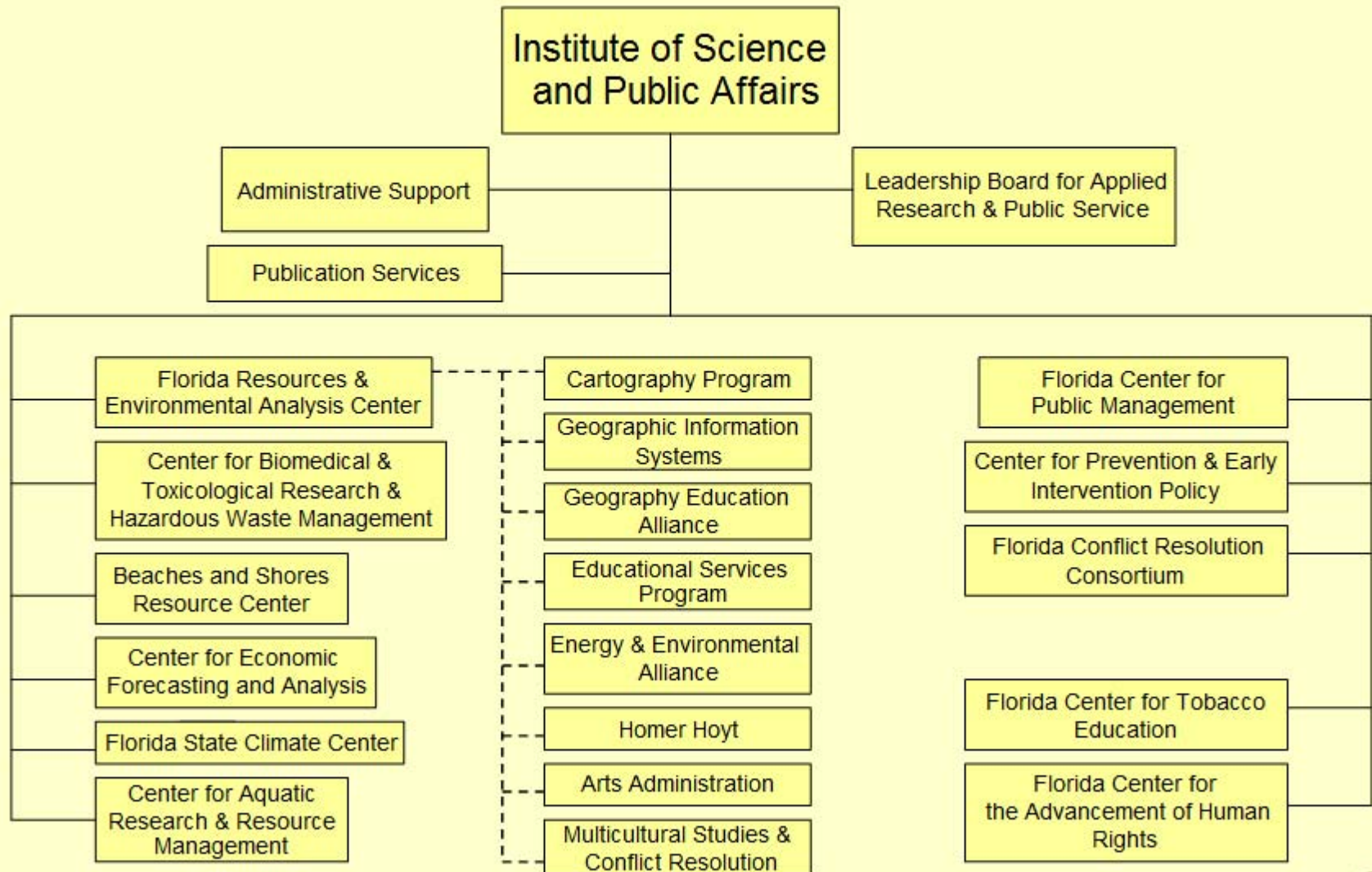




# INSTITUTE OF SCIENCE AND PUBLIC AFFAIRS



# INSTITUTE OF SCIENCE AND PUBLIC AFFAIRS



# *ORIGINS*

- ❖ 1940's Florida Resources Analysis Center (FRAC)
- ❖ 1969 Reconstitution as Florida Resources and Environmental Analysis Center (FREAC)
- ❖ 1972 Legislative Authorization of FREAC Activities





# *FREAC OBJECTIVES*

- ❖ Create a multi-disciplinary research program
- ❖ Increase number of qualified applicants for state employment
- ❖ Disseminate scientific information concerning environmental, land and resource data in Florida
- ❖ Improve cooperation of various segments of the University community and the state government
- ❖ Include practical experience as a element of high quality graduate programs
- ❖ Develop leadership, education and research on resource use
- ❖ Accumulate environmental, land resource data
- ❖ Provide mechanism to offer faculty release time for environmental, land and resource activities



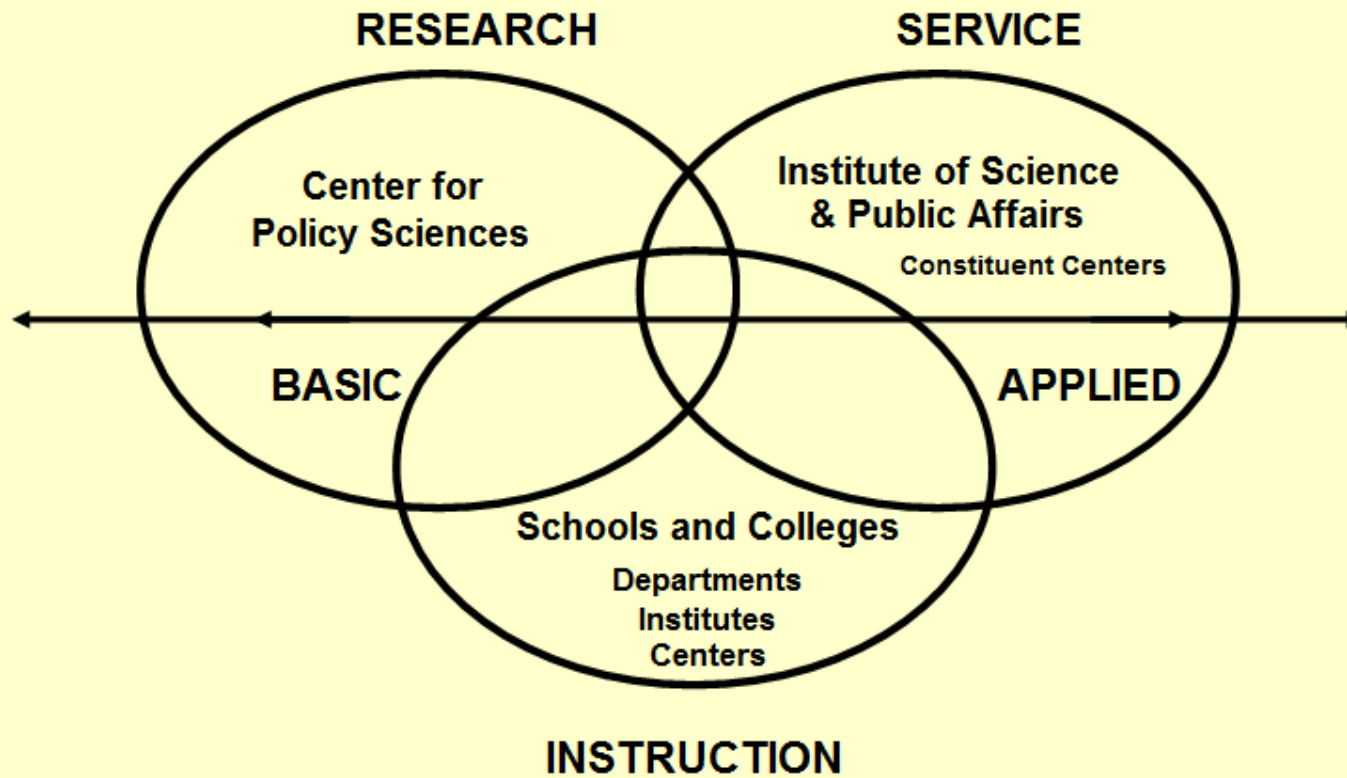
# *ISPA*

*Formed in 1978 to Enhance FSU Public Service Mission*

- ❖ Consolidation of several university-wide outreach units within a new Institute -- ISPA (A type II Center), including:
  - ❖ The Center for Professional Development
  - ❖ Public Managers Training and Advisory Service
  - ❖ FREAC
- ❖ Creation of Associate Vice President for Academic Affairs: Public Service
- ❖ Appointment of a Public Service Coordinating Council
- ❖ Designation of Policy Sciences Center of Excellence



# *PUBLIC SERVICE RELATIONSHIPS FLORIDA STATE UNIVERSITY 1978*



# *University Roles Within Instruction, Research, & Public Service*

Investigator,  
Cooperator,  
Facilitator,  
Collector,  
Incubator,  
Inventor,  
Dissertator,  
Generator,  
Preceptor,  
Tutor,  
Arbitrator,  
Administrator,  
Problem-Solver,  
Prognosticator,  
Provocateur,

Surveyor,  
Explicator,  
Interlocutor,  
Conservator,  
Originator,  
Activator,  
Contractor,  
Instructor,  
Cultivator,  
Motivator,  
Advocator,  
Investor,  
Executor,  
Projector,  
Ratiocinator,

Ruminator,  
Translator,  
Collaborator,  
Disseminator,  
Creator,  
Contributor,  
Applicator,  
Inculcator,  
Mentor,  
Moderator,  
Expositor,  
Prospector,  
Entrepreneur,  
Commentator,  
Promoter,

Elucidator,  
Monitor,  
Participator,  
Distributor,  
Detector,  
Reporter,  
Demonstrator,  
Educator,  
Editor,  
Adjudicator,  
Director,  
Instigator,  
Speculator,  
Detector,  
Coordinator





# *ISPA's Strategic Mission: Bringing Together Resources To Solve Critical Problems*

**In the Solution of Critical Problems, ISPA will:**

1. Elucidate and Respond effectively and efficiently to Needs for Applied Research and Public Service
2. Collect and Disseminate the Best Information
3. Help Coordinate and Quickly Deploy the Resources of the University
4. Provide Practical Experience and Training of students
5. Offer Administrative and Financial Support for Investigators, Trainers and Contractors
6. Act as an On-Going Highly Respected Resource for State Officials



# *ISPA*

## *Moving Beyond the Original Mission*

To provide administrative and organizational support for university based applied research and public service centers engaged in:

- ❖ **Training**
- ❖ **Technical assistance**
- ❖ **Research**

Providing a focal point among centers and institutes at FSU.



# ISPA: Organizational Development

\* a name change has occurred

	1978	1982	1988	1995	2002
•Florida Resources & Environmental Analysis Center	_____				
•Center for Professional Development & Public Service*	_____				
•Center for Employee Relations & Law	_____				
•Center for Advancement & Procurement*	_____				
•The Environmental Hazards Center	_____				
•Florida Center for Productivity	_____				
•Florida Economic Forecasting Center	_____				
•Center for Family Services	_____				
•Center for Biomedical & Toxicological Research & Hazardous Waste Management*	_____				
•Florida State Climate Center	_____				
•Center for Applied Science	_____				
•Beaches & Shores Resource Center	_____				
•Homer Hoyt Economics & Real Estate	_____				
•Administrative Center for Cooperative Development	_____				
•Center for Privatization, Land Administration & Economic Reform	_____				
•Florida Center for Public Management	_____				
•Center for Aquatic Research & Resources Management	_____				
•Florida Conflict Resolution Consortium*	_____				
•International Public Management & Policy Center	_____				
•Florida Public Affairs Center	_____				
•Center for Arts Administration	_____				
•Center for Prevention & Early Intervention Policy	_____				
•Institute of Law & Society	_____				
•Florida Center for Tobacco Education	_____				
•Florida Center for the Advancement of Human Rights	_____				

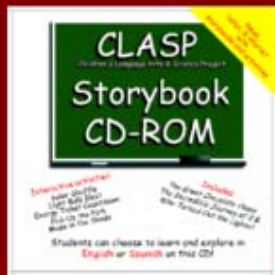
# *ISPA*

## *Change and Continuity*

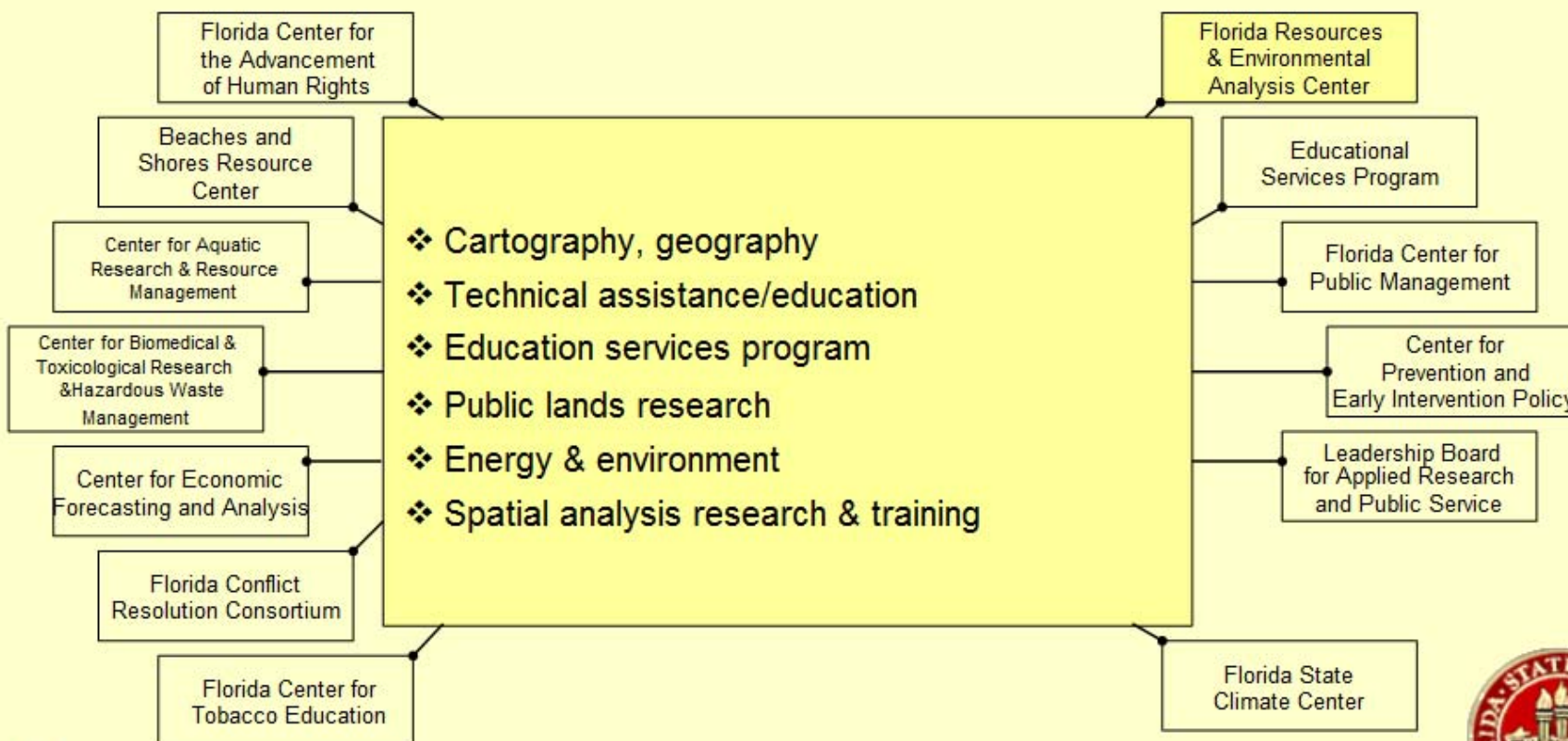
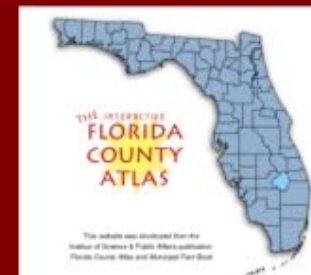
- ❖ Pattern of Expansions and Contractions in Response to Problems
- ❖ Growing Commitment to Relationships with K-12 Education
- ❖ Broadening Functional Involvement
- ❖ Continuing Commitment to High Quality, Low Cost, On Time Technical Assistance, Training and Research





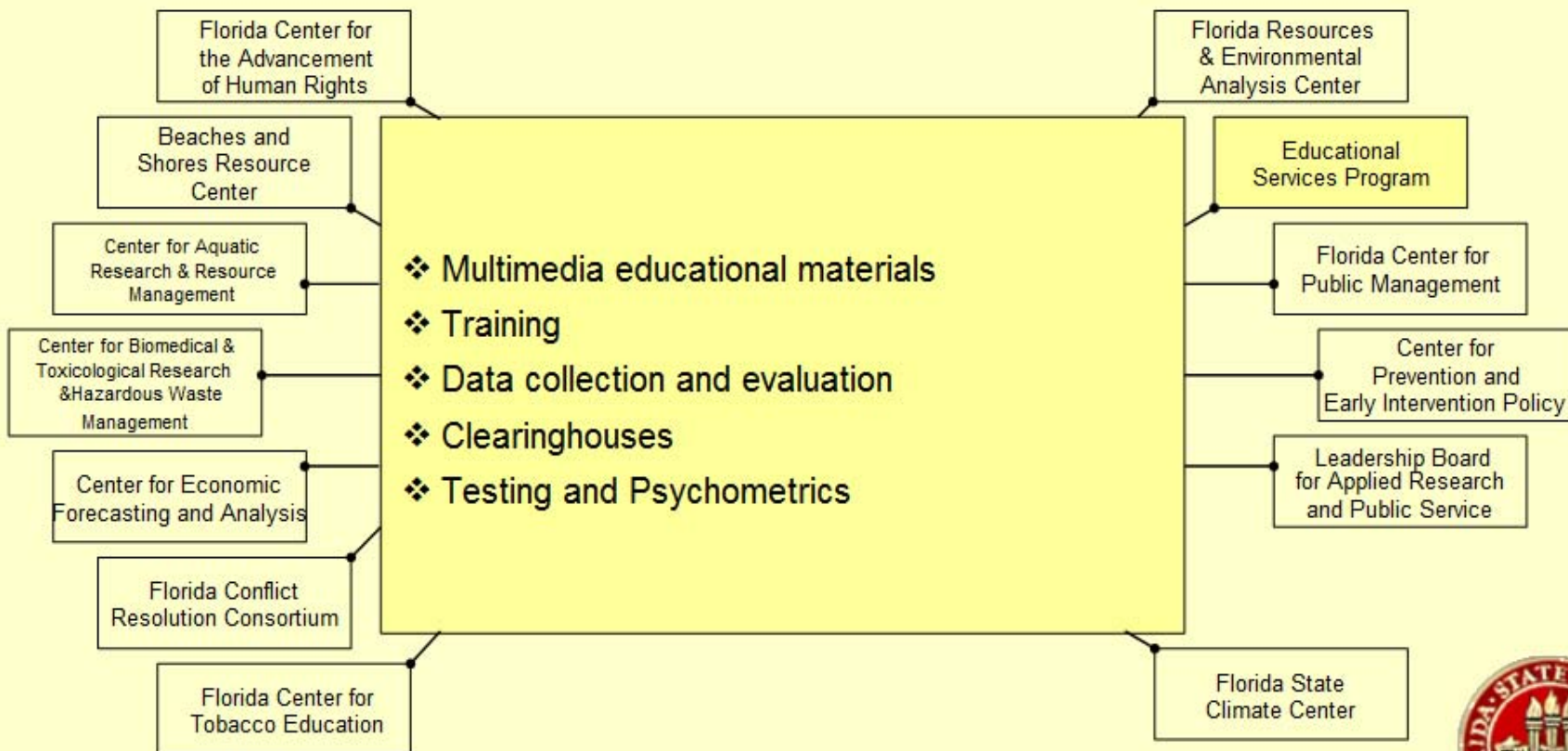


# ISPA: Areas of Focus





# ISPA: Areas of Focus





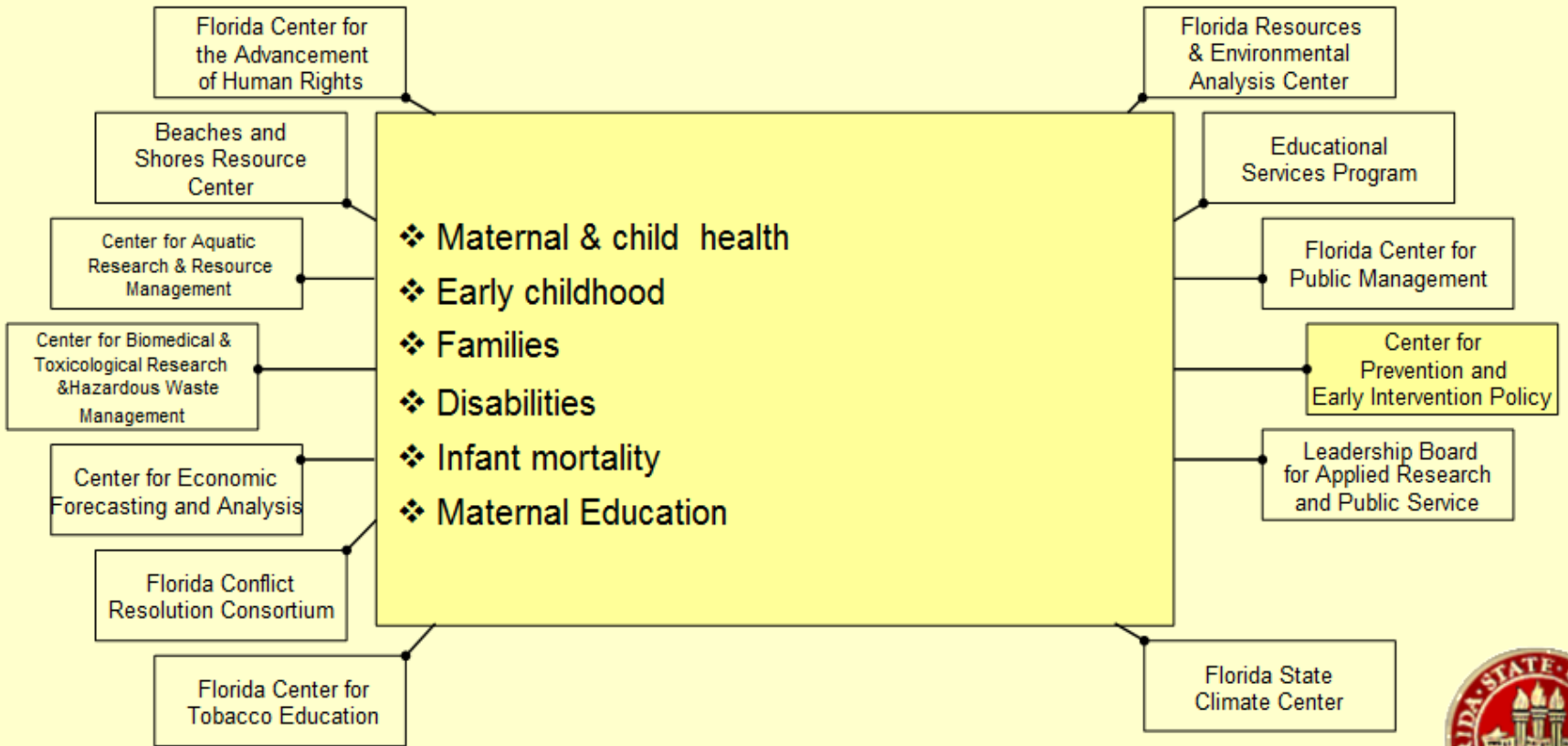
# ISPA: Areas of Focus







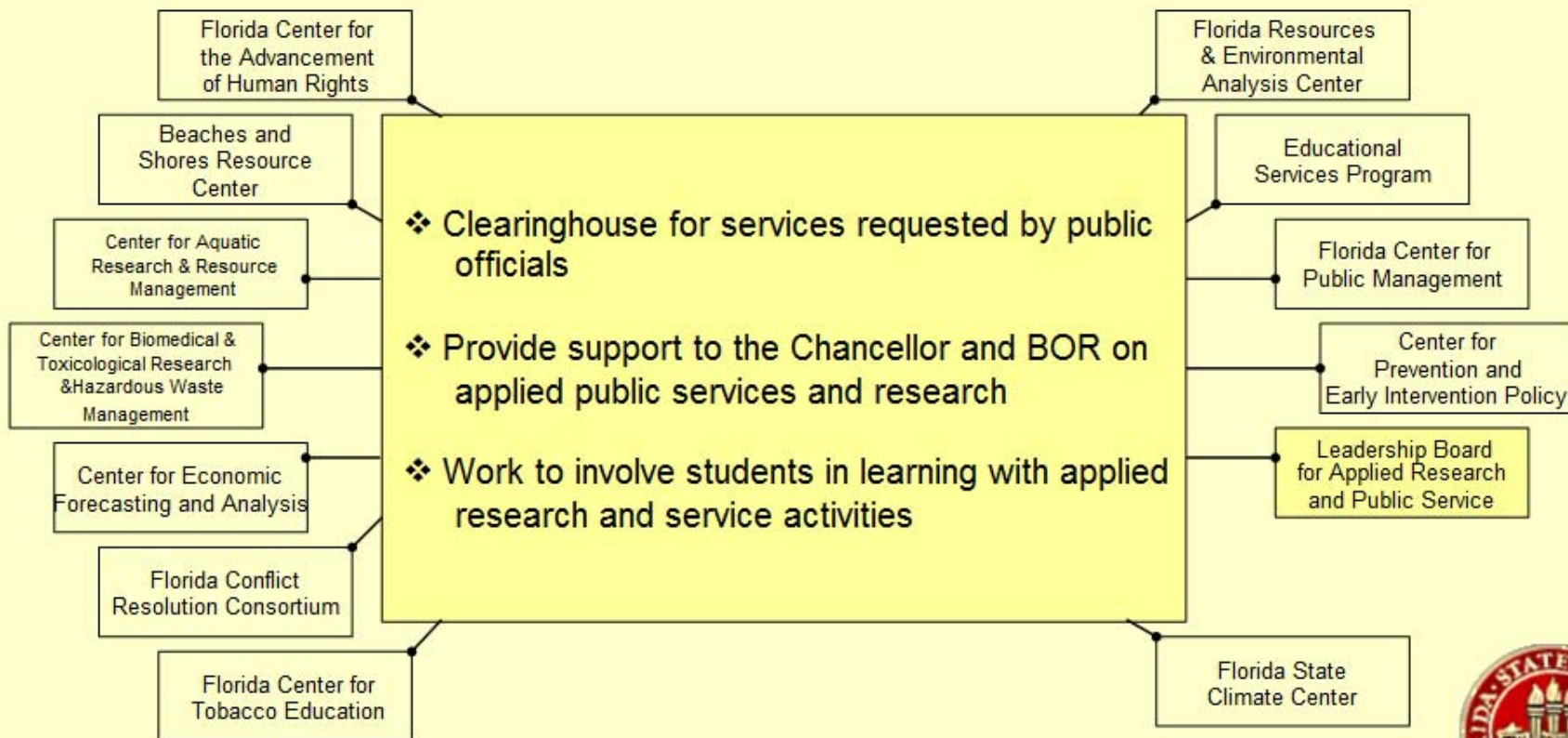
# ISPA: Areas of Focus





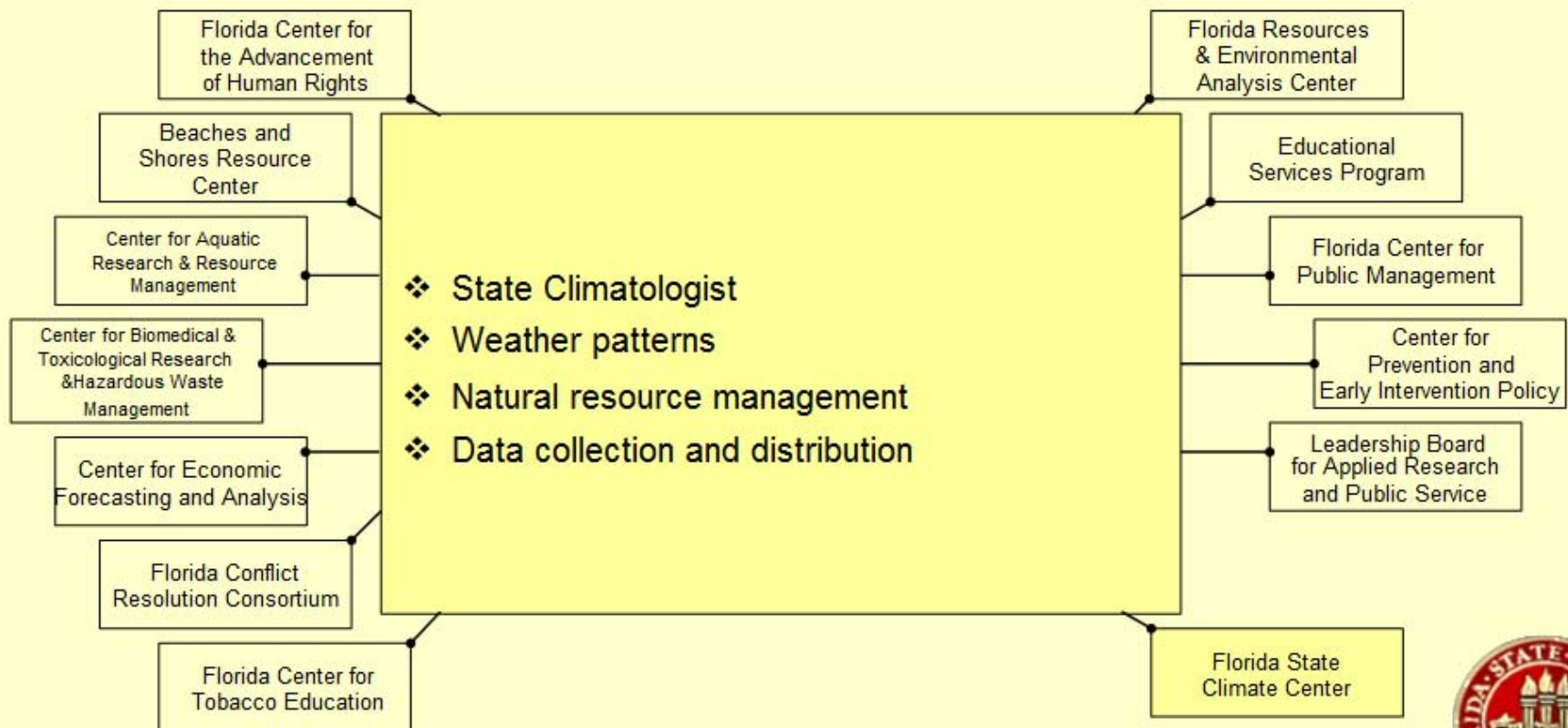


# ISPA: *Areas of Focus*



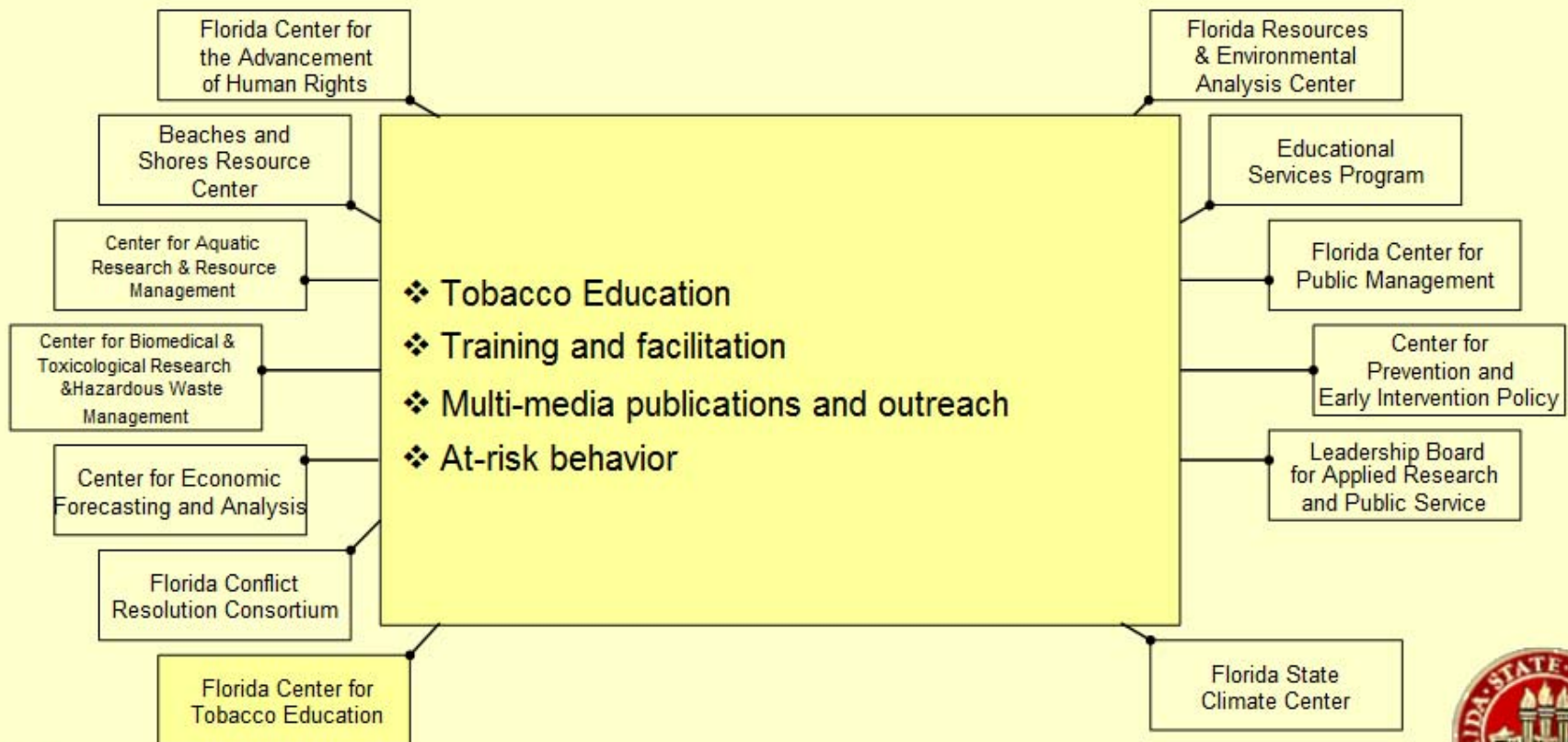


# ISPA: Areas of Focus





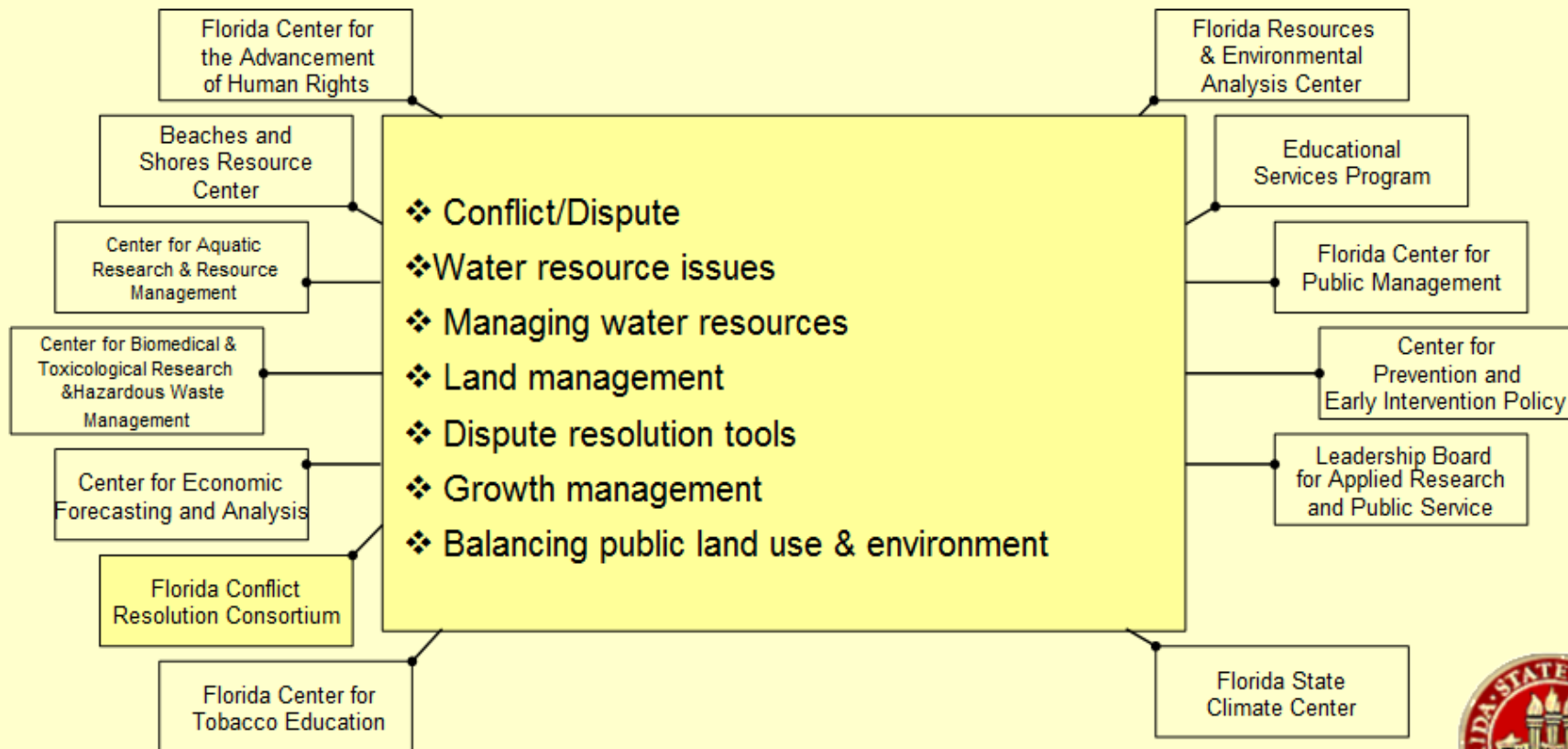
# ISPA: *Areas of Focus*







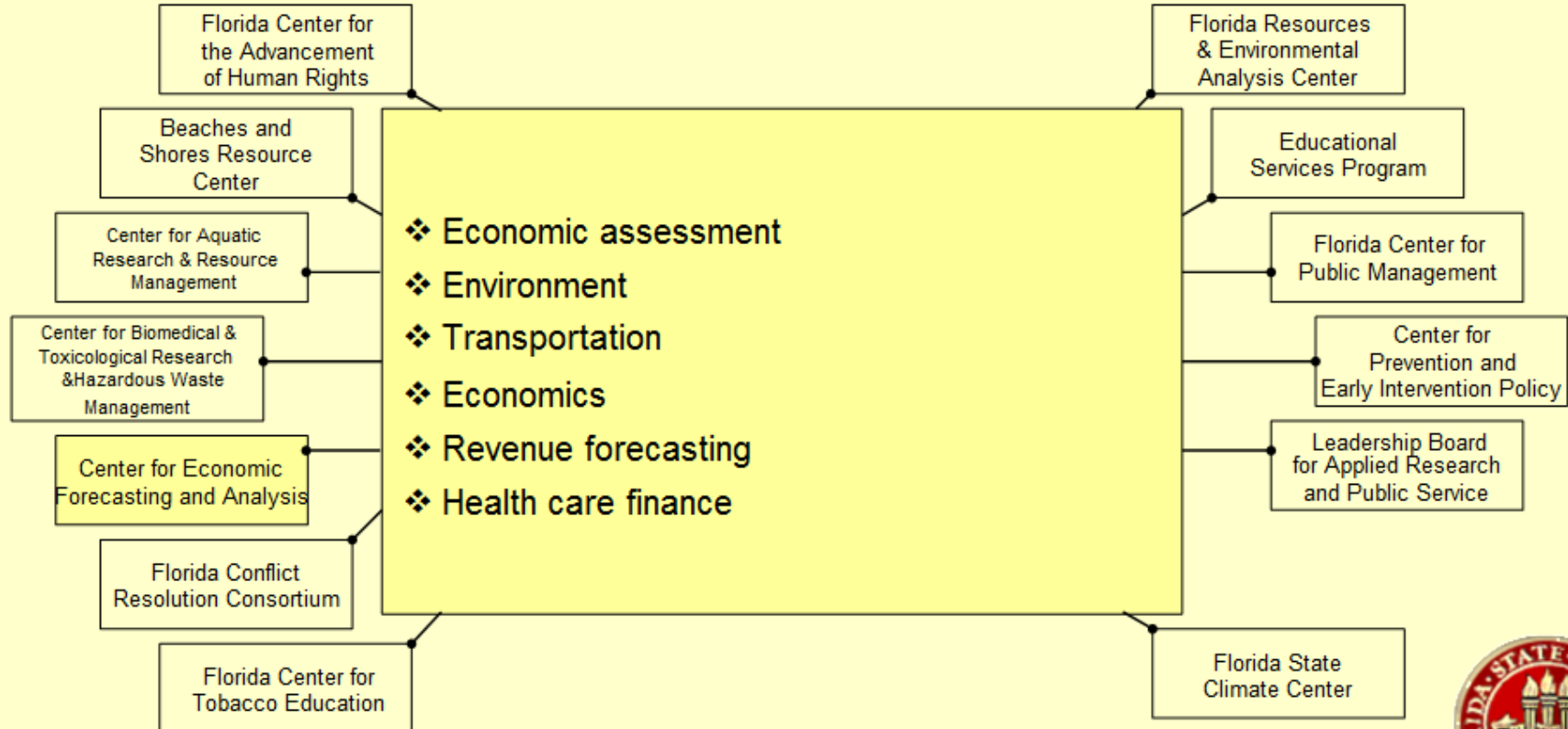
# ISPA: Areas of Focus







## *ISPA: Areas of Focus*



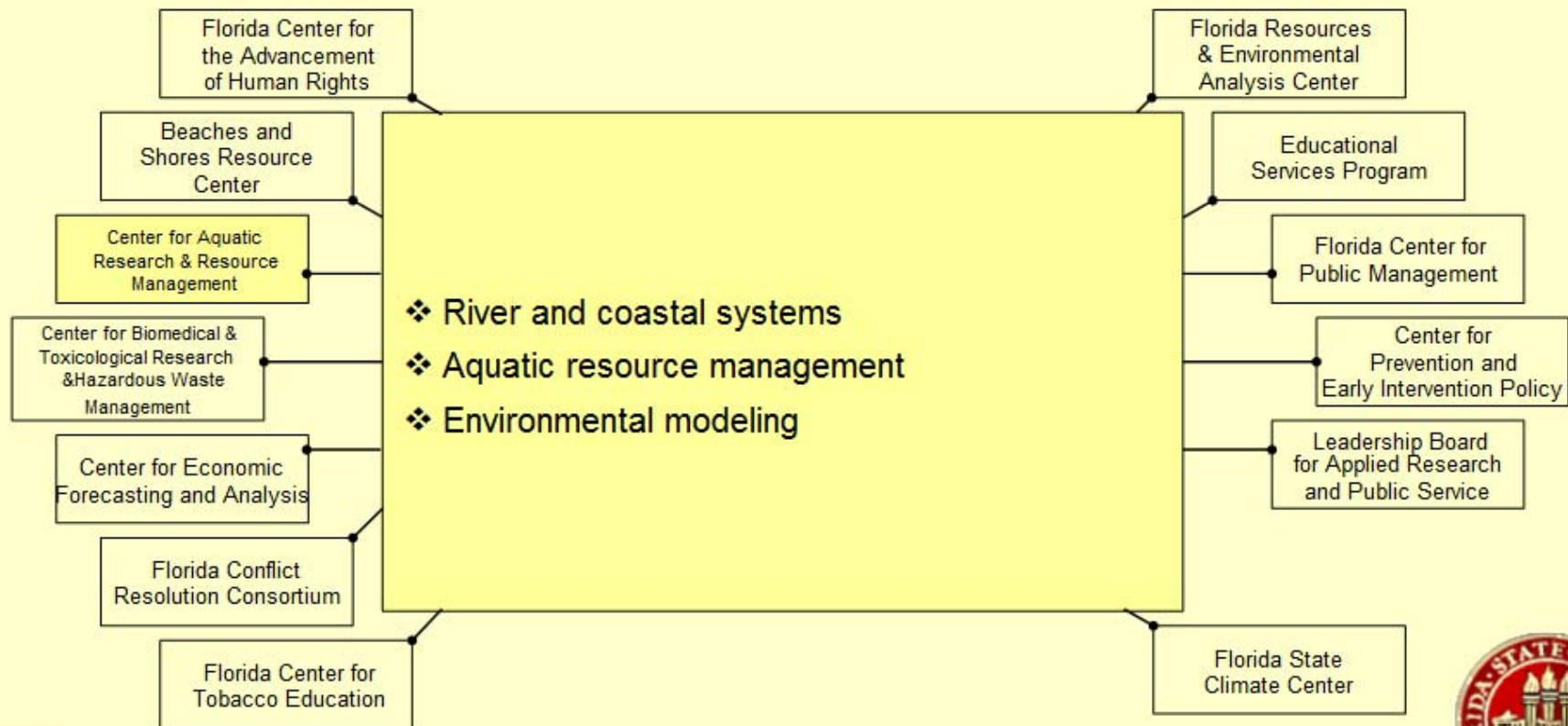


# ISPA: Areas of Focus



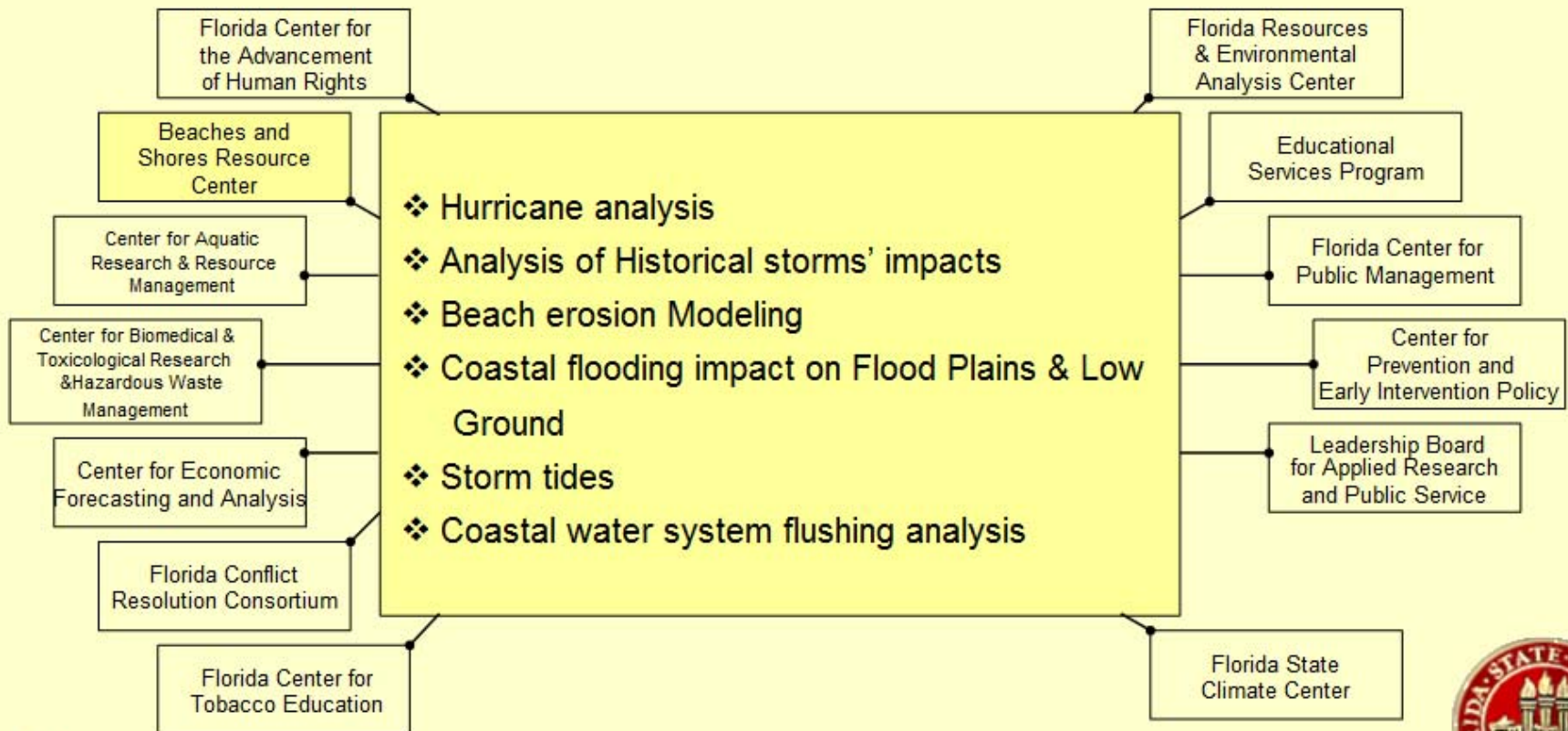
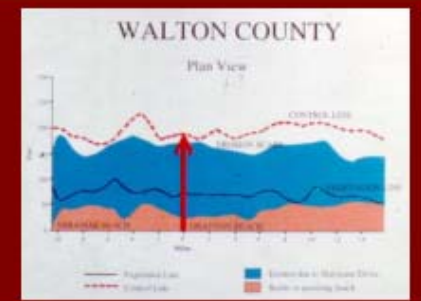


# ISPA: Areas of Focus



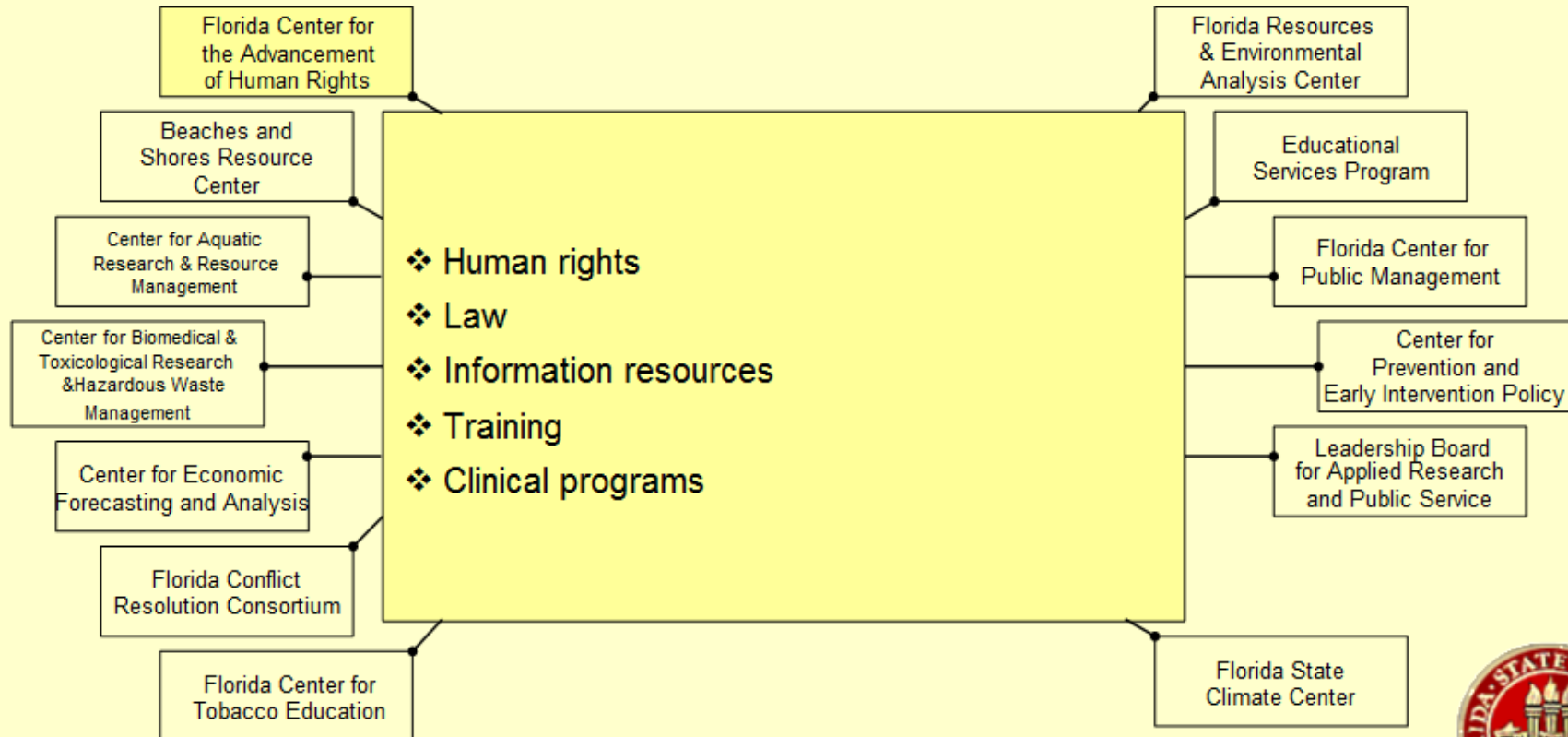


# ISPA: Areas of Focus





# ISPA: Areas of Focus



# *THE FLORIDA INSTITUTE OF GOVERNMENT*

- ❖ Type I Statewide Institute
- ❖ Mission is to increase the effectiveness and quality of government in Florida through its research, training, and technical assistance services



# *CHARACTERISTICS OF THE INSTITUTE OF GOVERNMENT*

- ❖ A decentralized organization with a central statewide mission
- ❖ Involves both state universities and community colleges
- ❖ Acts upon the advice of a policy council made up of 20 representatives appointed by the Chancellor of the State University System (SUS)
- ❖ Receives an allocation of state funds from the Florida Board of Regents for its operations
- ❖ Is administratively hosted by FSU



# *INSTITUTE OF GOVERNMENT AFFILIATES*

## *Institute Training and Technical Assistance (ITTA) Program*

- ❖ University programs that primarily focus on Public Policy, Research, Technical Assistance, & Executive Development
- ❖ Community college programs that strive to improve governmental operations through management and supervisory and employee training





# *INSTITUTE OF GOVERNMENT ACTIVITIES*

- ❖ Training
- ❖ Technical Assistance
- ❖ Research
- ❖ Publications



# *THE INSTITUTE FOR INTERNATIONAL COOPERATIVE ENVIRONMENTAL RESEARCH*

- ❖ Mission is to identify, evaluate and demonstrate, internationally, innovative environmental technologies for site clean up
- ❖ The Institute serves as a resource to inform and link students, environmental professionals and agency personnel engaged in environmental contamination issues throughout the world
- ❖ On campus educational experience for advanced foreign students and faculty



# *CHARACTERISTICS OF THE INSTITUTE FOR INTERNATIONAL COOPERATIVE ENVIRONMENTAL RESEARCH*

- ❖ Engages in research, training and other activities related to environmental contamination, including the identification, characterization, treatment, remediation and human health impacts of exposures to environmental contamination
- ❖ Provides International Conferencing Capabilities
- ❖ Performs Environmental Engineering Project Management
- ❖ Conducts Specialized Toxicology and Risk Assessment of International Projects



# *INSTITUTE FOR INTERNATIONAL COOPERATIVE ENVIRONMENTAL RESEARCH -- ISSUE AREAS*

- ❖ Site Characterization Techniques
- ❖ Sampling and Monitoring Methods
- ❖ Control Technologies and Risk Assessment
- ❖ Human Health Impacts from Exposures to Contaminants
- ❖ Site Treatment and Other Remediation Technologies
  
- ❖ Decontamination and Decommissioning of Facilities
- ❖ Programmatic, Legal, Economic and Organizational Issues in Environmental Research





# *IMPACTS*

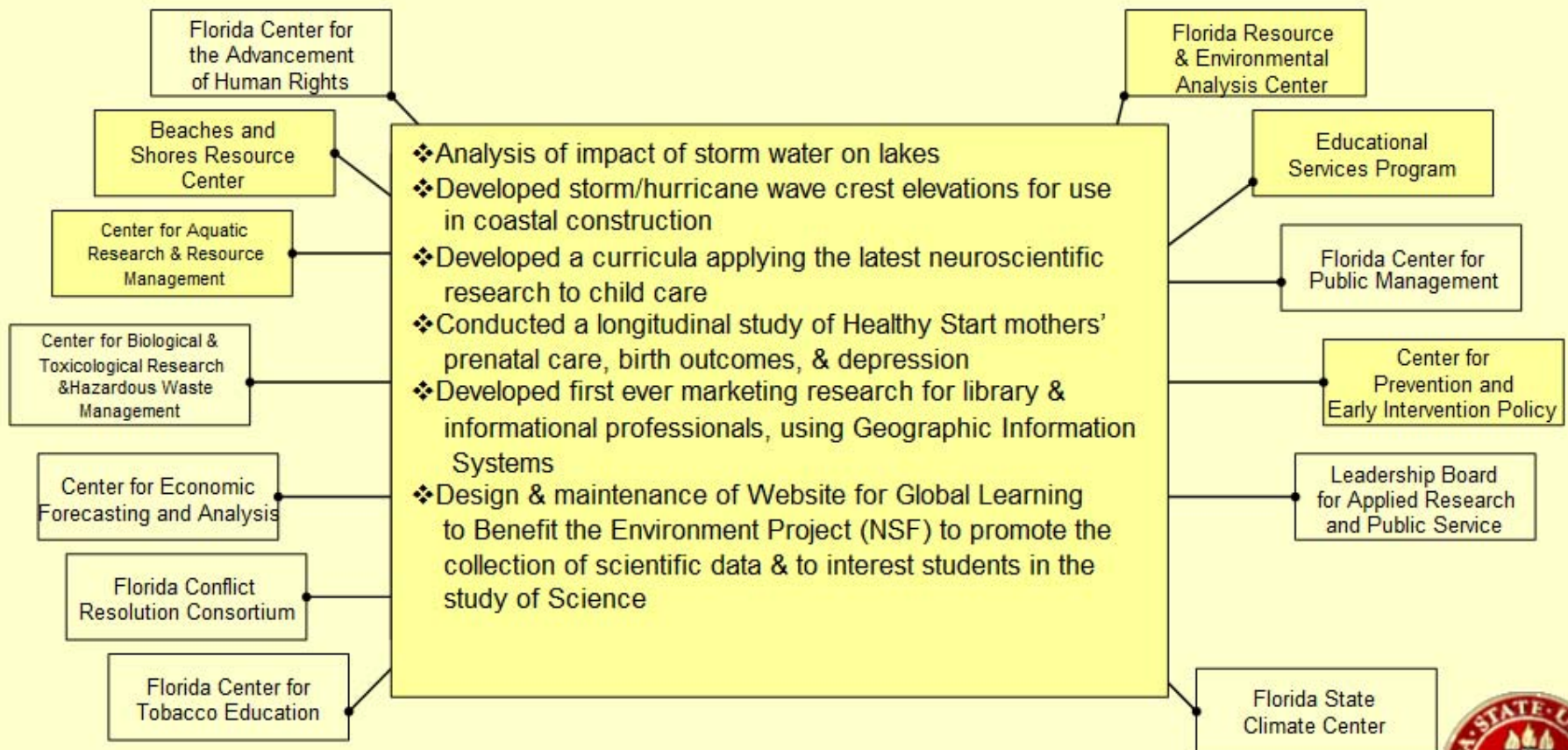
Performance



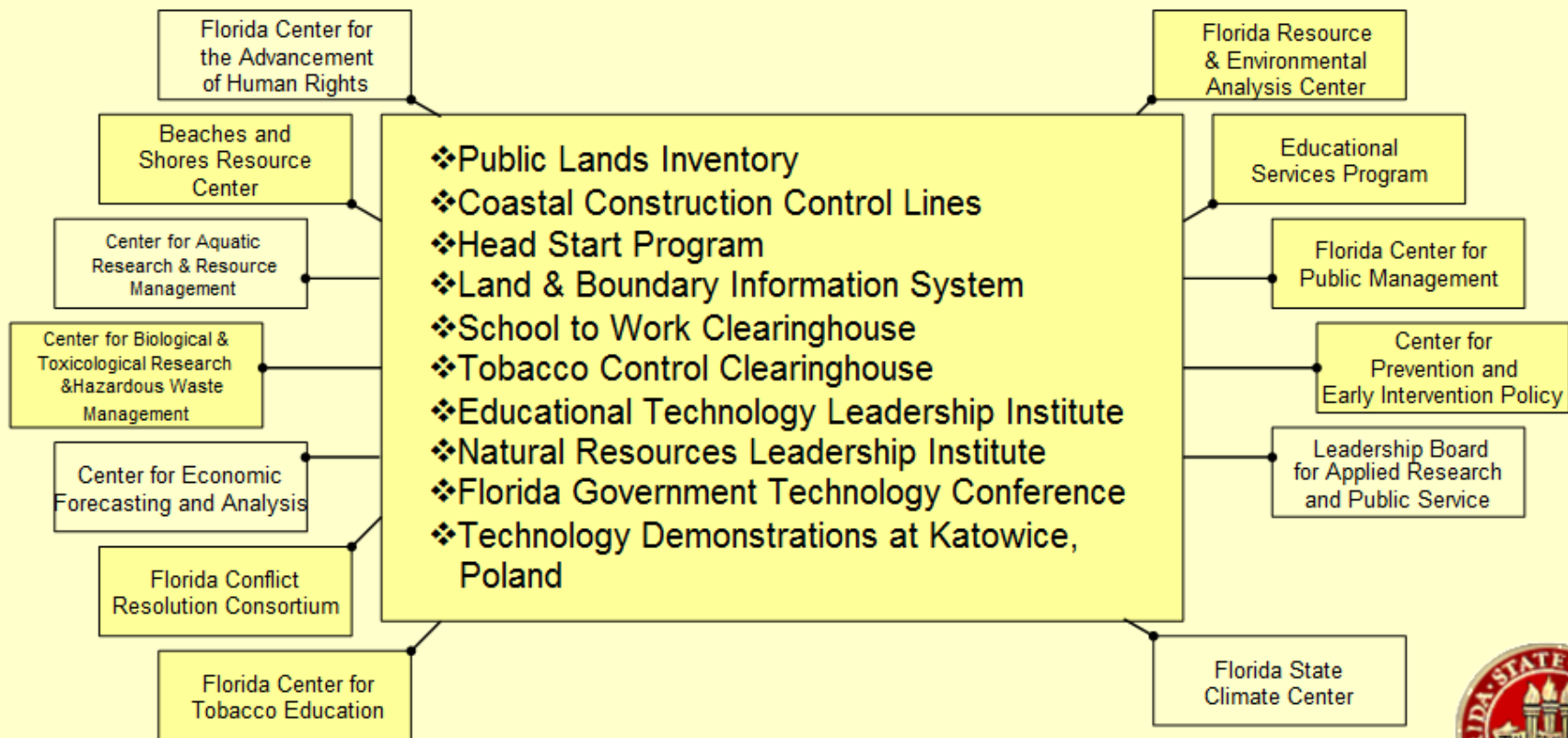
Assessment



# Research and Development Activities

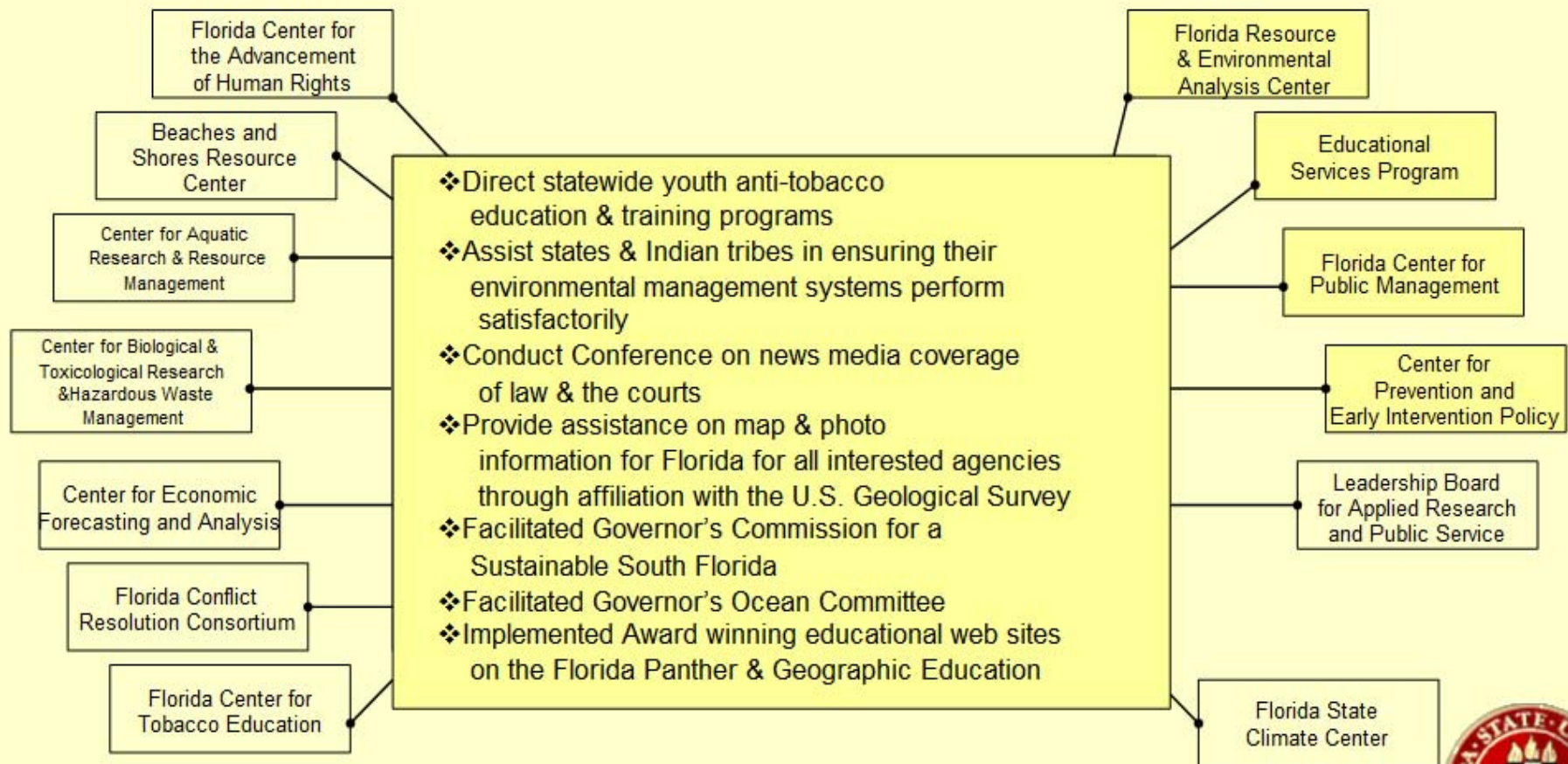


# Ongoing Operational & Technical Assistance Responsibilities



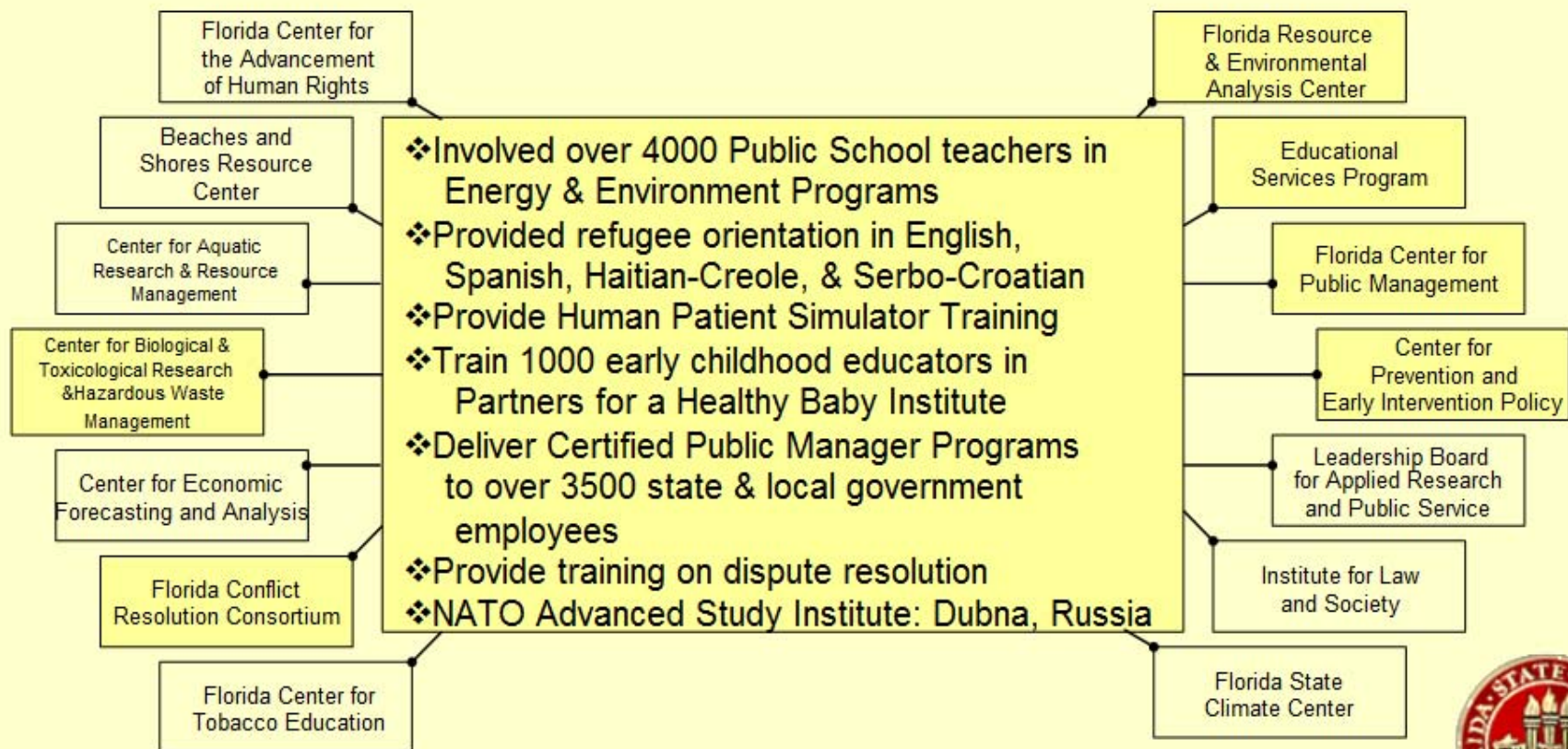


# Public Service Activities

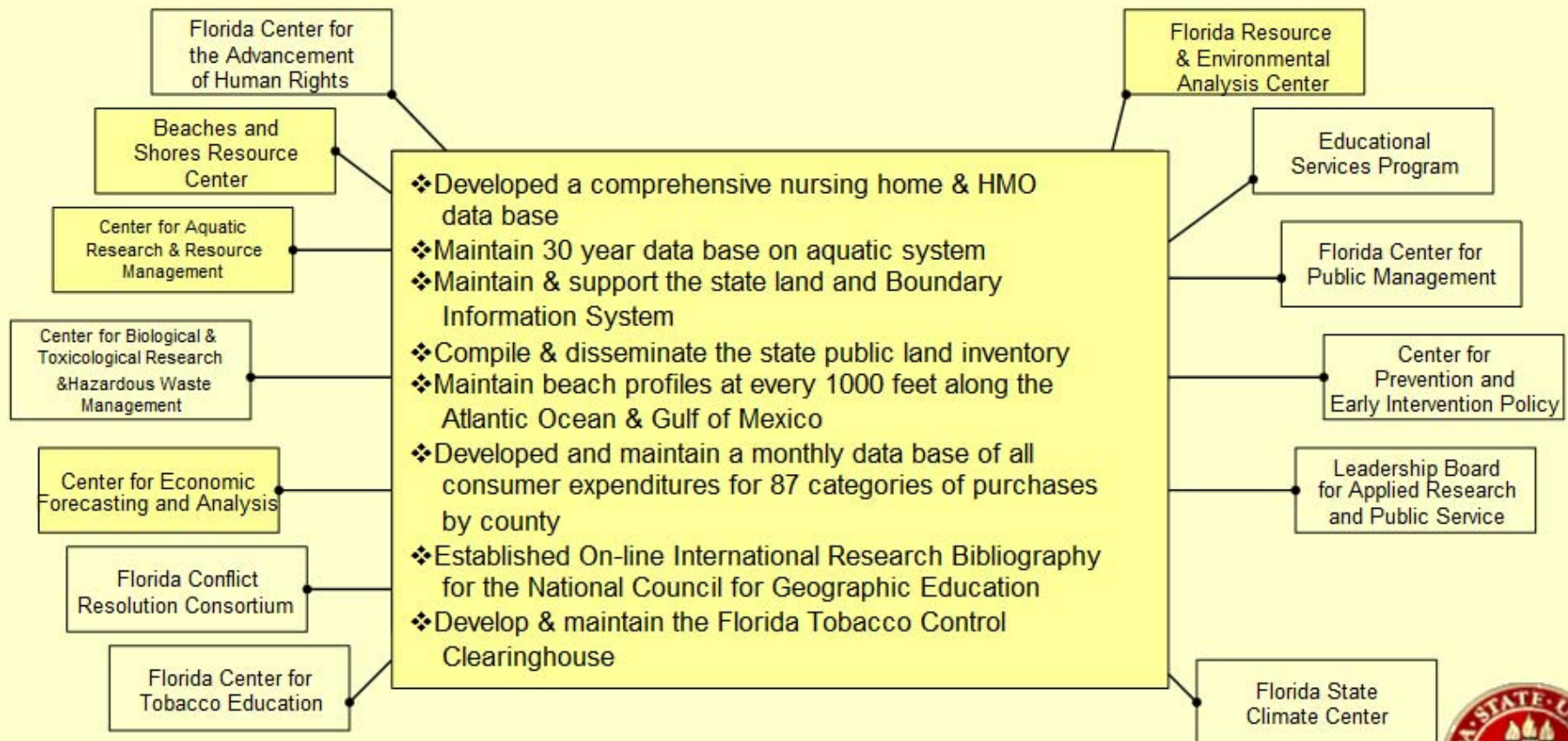




# Training and Educational Activities

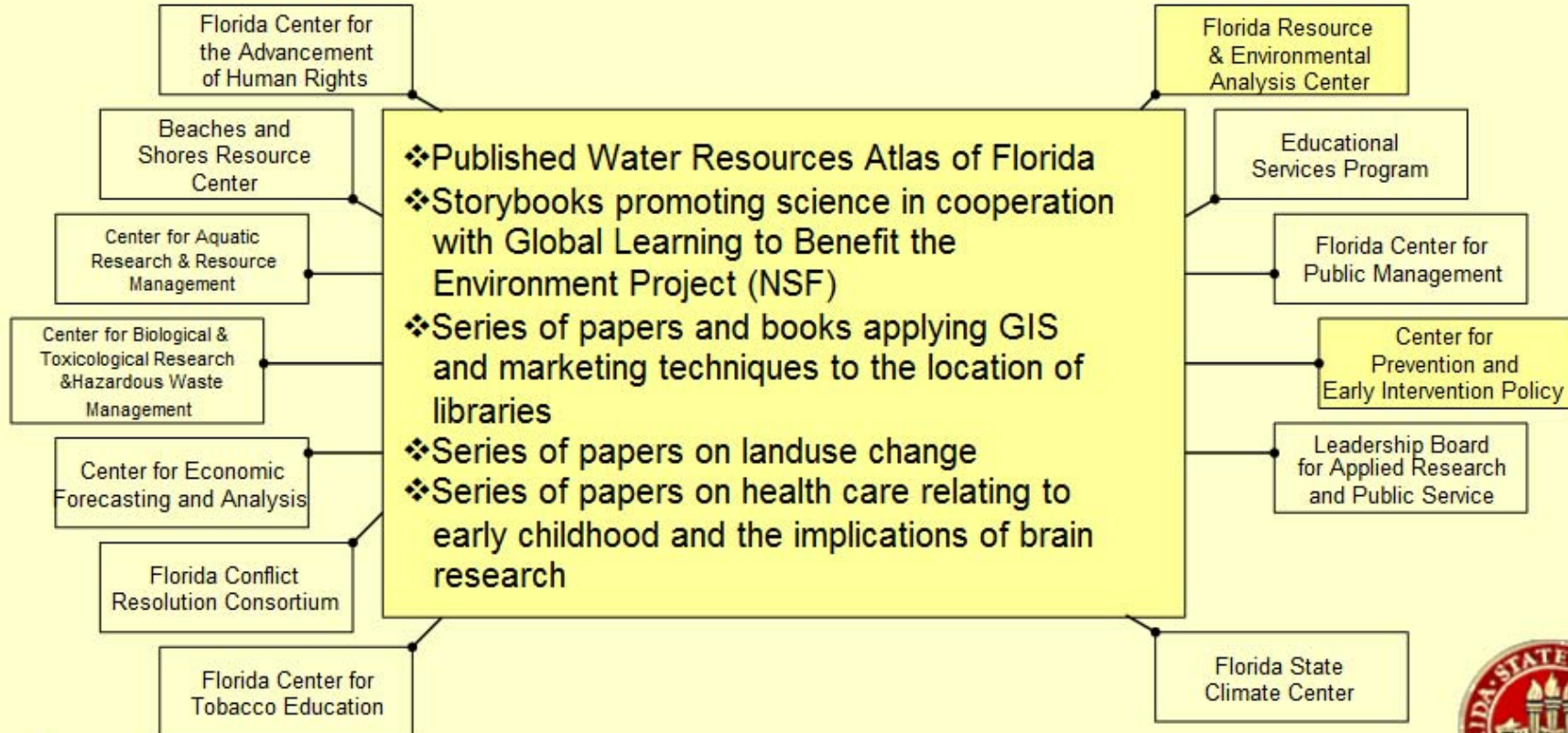


# Information Collection, Compilation, & Dissemination Activities





# Publication and Multi-Media Activities



# *INSTITUTE OF GOVERNMENT*

## *Training to Organizations*

- ❖ Florida Association of Court Clerks
- ❖ Florida League of Cities
- ❖ Florida Association of Counties and the Florida Counties Foundation
- ❖ Florida Association of City Clerks
- ❖ Florida Commission on Ethics
- ❖ Panhandle League of Cities
- ❖ Florida City and County Management Association
- ❖ Florida Government Finance Officers Association





## *INSTITUTE OF GOVERNMENT -- ITTA'S TRAINING ACTIVITIES*

*Sample Year*

<u>Affiliate</u>	<u>Participants</u>	<u>Workshops</u>	<u>Contact Hours</u>
University of North Florida	4,208	145	21,220
University of South Florida	4,467	156	32,114
Santa Fe Community College	1,928	85	18,445
Manatee Community College	3,020		34,546
Florida International University	3,898	214	21,347
Edison Community College	3,798	214	21,347
University of Central Florida	6,599	261	41,679
Florida Atlantic University	12,016	519	59,149
University of West Florida	3,872	143	14,591
Palm Beach Community College	3,080	120	15,285
Florida State University	8,872	246	33,995
University of Florida			
<b>TOTAL</b>	<b>55,758</b>	<b>2,103</b>	<b>313,718</b>

55,758 participants statewide - 8,872 participants at FSU



# *BENCHMARKS*

- ❖ Longevity
- ❖ Previous Performance
- ❖ Performance Against National or Professional Norms
- ❖ Performance Against Comparable Entities
- ❖ Critical Replacement Status
- ❖ Reputation



# *COMPARABLE ENTITIES*

<u>Center/Institute</u>	<u>Nationally</u>	<u>SUS</u>
<b>Institute of International Cooperative Environmental Research</b>	See CBTR	See CBTR
<b>Institute for Health and Human Services Research</b>	None	1. Center for Drug Prevention & Health Prevention at UNF 2. Alcohol and Substance Abuse Research Institute at USF
<b>Florida Institute of Government</b>	Institute of Government at University of Georgia, UNC Chapel Hill, Virginia, Tennessee John C. Stennis Center, Mississippi State	None
<b>Leadership Board for Applied Research &amp; Public Service</b>	None	None
<b>Institute of Science &amp; Public Affairs</b>	1. Public Service Research Program at the University of California, Davis 2. Institute of Public Affairs at the University of South Carolina	Joint Center for Environmental & Urban Problems at FAU
<b>Florida Resources and Environmental Analysis Center</b>	None	1. Geographic Information Systems Center at FIU 2. GEO Plan Center at UF
<b>Educational Services Program</b>	National Competitions	None
<b>Center for Biomedical &amp; Toxicological Research &amp; Hazardous Waste Management</b>	None	Hemispheric Center for Environmental Technology at FIU
<b>Beaches and Shores Resource Center</b>	None	None



# *COMPARABLE ENTITIES*

<u>Center/Institute</u>	<u>Nationally</u>	<u>SUS</u>
<b>Center for Economic Forecasting &amp; Analysis</b>	None	Bureau of Economic and Business Research at UF
<b>Florida Center for Public Management</b>	Nationally Certified	None
<b>Center for Prevention &amp; Early Intervention Policy</b>	None	1. Institute for Child Health Policy at UF 2. Lawton & Rhea Chiles Center for Healthy Mothers & Babies at USF
<b>Florida Conflict Resolution Consortium</b>	SPIDER Organization	None
<b>Institute for Law and Society</b>	None	None
<b>Florida State Climate Center</b>	Organization of State Climatologists	None
<b>Center for Aquatic Research &amp; Resource Management</b>	None	None
<b>Florida Tobacco Education Center</b>	Tobacco & Health Research Institute at University of Kentucky	None
<b>Florida Center for the Advancement of Human Rights</b>	1. Human Rights Program at Harvard Law School 2. Human Rights Center at UCLA, Berkley	None



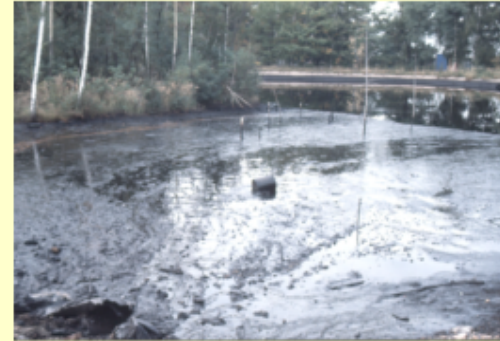


# Activities Initiated or Governed By Statute



# Critical Replacement Activities

- ❖ Certified Public Manager Program Training
- ❖ Florida Government Technology Conference
- ❖ Support of IOG Affiliates and Statewide Workshops
- ❖ International Environmental Symposium
- ❖ Dense Non-Aqueous Phase Liquid Project at Cape Canaveral
- ❖ State Land and Boundary Information System
- ❖ State Voting Precinct Data Base
- ❖ State Public Lands Inventory
- ❖ Coastal Construction Control Lines
- ❖ 30-Year Ecological Data Base
- ❖ FSU Early Head Start
- ❖ Florida Educational Technology Leadership Institute
- ❖ School to Work Clearinghouse
- ❖ Tobacco Control Clearinghouse
- ❖ SUS Research and Centers Clearinghouse
- ❖ Occupational Test Development and Administration
- ❖ Multimedia Production Capabilities
- ❖ Geographic Information Systems Laboratory
- ❖ Tobacco Education Network Coordination
- ❖ Conflict Resolution Consortium
- ❖ Social Policy Evaluation Capabilities
- ❖ Partners for Healthy Babies Institute Training



# *External Assessment of Centers and Institutes*

## **Center/Institute**

## **External Assessment**

Institute for International Cooperative Environmental Research

See CBTR

Institute for Health and Human Services Research

Proposal Review Process

Florida Institute of Government

Advisory Council, Legislative Review

Leadership Board for Applied Research and Public Service

Advisory Board

Institute of Science and Public Affairs

Proposal Review and Center Performance

FREAC

State Agency Response

Educational Services Program

Proposal Review Process

Center for Biomedical and Toxicological Research and  
Hazardous Waste Management

Proposal Review Process

Beaches and Shores Resource Center

Contract Review

Center for Economic Forecasting and Analysis

Proposal Review Process

Florida Center for Public Management

Certification Process and Conference Partnership Board

Center for Prevention and Early Intervention Policy

Proposal Review Process

Florida Conflict Resolution Consortium

Advisory Council, 1997 Langston Associates Review

Institute for Law and Society

Proposal Review Process

Florida State Climate Center

National Climatic Data Center, NOAA

Center for Aquatic Research and Resource Management

Proposal Review Process

Florida Tobacco Education Center

Proposal Review Process





# *Illustrative Ongoing External Collaborations Among Centers and Institutes: Sample Year*

<b>Center/Institute</b>	<b>External Collaborations</b>
<b>Institute for International Cooperative Environmental Research</b>	see CBTR
<b>Institute for Health and Human Services Research</b>	Department of Community Affairs, Department of Health, Department of Juvenile Justice
<b>Florida Institute of Government</b>	8 Universities and 4 Community Colleges, Court Clerks, League of Cities, Florida Association of Counties, FL Legislature, DEP, DCA, DOT, FL Chamber of Commerce, Assoc. of City Clerks, FL Government Finance Officers Association
<b>Institute of Science and Public Affairs</b>	State Comptroller, Florida Senate & House, Insurance Committee, Secretary of State
<b>FREAC</b>	Various Water Management Districts, Various School Districts, National Geographic, Department of Environmental Protection, Legislature, Geographic Information Board), USGS, FL Board of Geographic Names
<b>Educational Services Program</b>	Department of Education, Department of Business and Professional Regulation, Board of Regents
<b>Center for Biomedical and Toxicological Research and Hazardous Waste Management</b>	US Department of Energy, NATO
<b>Beaches and Shores Resource Center</b>	Department of Environmental Protection
<b>Center for Economic Forecasting and Analysis</b>	Agency for Health Care Administration, Board of Regents, Department of Insurance, Department of Transportation





# *Illustrative Ongoing External Collaborations Among Centers and Institutes: Sample Year*

<b>Center/Institute</b>	<b>External Collaborations</b>
<b>Florida Center for Public Management</b>	Department of Management Services, Department of Agriculture and Consumer Services, Department of Corrections, Department of Revenue, Department of Law Enforcement, City of Tallahassee, Various Cities and Counties
<b>Center for Prevention &amp; Early Intervention Policy</b>	Department of Children and Families, Department of Health and Human Services, Center for Disease Control, University of Miami
<b>Florida Conflict Resolution Consortium</b>	Department of Community Affairs, Department of Environmental Protection, UF Institute of Food and Agricultural Sciences
<b>Institute for Law and Society</b>	Supreme Court, Florida Bar Association, American Bar Association
<b>Florida State Climate Center</b>	National Climatic Data Center, Southeast Regional Climate Center, The Florida Consortium (FSU, UF, Miami)
<b>Center for Aquatic Research &amp; Resource Management</b>	Department of Environmental Protection
<b>Florida Tobacco Education Center</b>	Department of Health, Statewide Youth Anti-tobacco education and training programs, all state universities and UM, TSI Inc.



# *Ongoing University Collaborations Among Centers and Institutes: Sample Year*

<b>Center/Institute</b>	<b>University Collaborations</b>
<b>Institute for International Cooperative Environmental Research</b>	see CBTR
<b>Institute for Health and Human Services Research</b>	Social Work, Social Sciences
<b>Florida Institute of Government</b>	Askew School, Communications
<b>Institute of Science and Public Affairs</b>	see sub units
<b>FREAC</b>	Geography, Communications, Education, Business, History, Classics, Chemistry, Urban and Regional Planning, Anthropology
<b>Educational Services Program</b>	Education, Information Studies
<b>Center for Biomedical and Toxicological Research and Hazardous Waste Management</b>	Biology, Nursing, Chemistry, Urban and Regional Planning
<b>Beaches and Shores Resource Center</b>	Urban and Regional Planning
<b>Center for Economic Forecasting and Analysis</b>	Public Administration, Economics, Urban and Regional Planning, Business
<b>Florida Center for Public Management</b>	Public Administration, Information Studies, Geography
<b>Center for Prevention and Early Intervention Policy</b>	Human Sciences, Social Work, Special Education, Nursing, PIMS
<b>Florida Conflict Resolution Consortium</b>	Urban and Regional Planning, Law, Public Policy
<b>Institute for Law and Society</b>	Law, Communications, Criminology and Criminal Justice
<b>Florida State Climate Center</b>	Oceanography, Meteorology
<b>Center for Aquatic Research and Resource Management</b>	Biology
<b>Florida Tobacco Education Center</b>	Social Science, Education, Communication



# *Summarizing the Impacts*

- ❖ Longevity and Previous Performance Indicators are Available for Dollars
  - Evidence demonstrates strong performance in several areas
- ❖ Normed Performance Indicators are not available
  - No Compelling Available Evidence
- ❖ Comparable Performance Indicators are not available
  - No Compelling Available Evidence
- ❖ Critical Replacement Indicators have been identified but have not been scaled or validated
  - Substantial anecdotal evidence for valued performance in a broad range of critical areas
- ❖ Reputational Performance Indicators (External Review, Internal Review, Collaborators) are available but have not been scaled or validated
  - Selective evidence for highly valued performance in several critical areas



# *THE FUTURE*

I  
S  
P  
A





## *COMMISSION ON THE FUTURE GOALS FOR FSU*

1. Move into the Top Tier of America's Public Universities
2. Improve Undergraduate Education at FSU
3. Increase Access to Education at FSU
4. Solve Critical Problems and Improve the Quality of Life in Florida
5. Develop and Implement Creative, Innovative and Cost-effective Programs that Increase Efficiency Without Sacrificing Quality
6. Develop and Support State of the Art Technology Supported Education & Scholarship
7. Establish a Stable Reliable Source of State Funding that Supports Accomplishing the Mission of the University
8. Forge Public-Private Partnerships to Help the SUS Achieve its Goals



# UNIVERSITY GOALS & INSTITUTE OBJECTIVES

## Priorities:

	Respond effectively & efficiently to Needs	Collect & Disseminate the Best Information	Coordinate & Deploy Quickly University Resources	Provide Experience & Training to Students	Offer Administrative & Financial Support	Act as On-Going Respected Resource to State Officials
	<i>Problem Solver</i>	<i>Disseminator</i>	<i>Coordinator</i>	<i>Preceptor</i>	<i>Administrator</i>	<i>Facilitator</i>
University Goals:	<i>Contractor</i>	<i>Translator</i>	<i>Interlocutor</i>	<i>Instructor</i>	<i>Incubator</i>	<i>Collaborator</i>
Move into the top tier of America's Public Universities		X		X		
Improve Undergraduate & Graduate Education at FSU				X		
Increase Access to Education at FSU						
Solve Critical Problems & Improve the Quality of Life in Florida	X		X			X
Develop & Implement Creative, Innovative & Cost-effective Programs that Increase efficiency without sacrificing quality		X		X	X	X
Develop & Support State of the Art Technology Supported by Education & Scholarship		X	X			
Establish a Stable Reliable source of state funding that supports accomplishing the mission of the university	X	X	X			X
Forge public-private partnerships to help the SUS achieve its goals			X			

**X** Institute Objectives strongly support University Goals

**X** Institute Objectives support University Goals

## *DIRECTOR PRIORITIES IN SUPPORT OF UNIVERSITY GOALS*

- ❖ Provide Effective and Efficient Support to Investigators, Instructors and Contractors Throughout the University as Needed
- ❖ Pursue Opportunities and Reward Programs that Achieve Special State, National and International Recognition
- ❖ Improve and Expand the University's Ability to Solve Critical Problems of Special Interest to State Officials
- ❖ Revitalize and Reorganize the Preceptor Activities of Centers to Insure Meaningful Service Learning for Students
- ❖ Coordinate More Closely with Academic Units on the Technical Assistance, Training, Research and Development, Dissemination and Public Service Activities
- ❖ Maintain and Improve On-Going Technical Assistance and Public Service of Special Interest to State Officials





## *CRITICAL SUCCESS FACTORS*

1. Continued Progress in Streamlining and Improving FSU's Processes and Procedures
2. Continued Access to, Consultation with, and Support by State and Federal Program and Contract offices
3. Ongoing Commitment from the Leadership of key Centers and Academic Units to Increased coordination of instruction, research and development, and public service
4. Resolution of Cost Recovery Issues Within the Framework of Federal Cost Accounting Standards and State Limitations on Overhead
5. Targeted Support of Directors Aimed at Leveraging Critical Marketing and Innovation Activities
6. Alignment of Incentives to promote University goals and Encourage Ambitious Center Agendas





## *CONCLUSION*

### *ISPA & RELATED CENTERS*

- ❖ Have a Demonstrated Record of Providing High Quality and Timely Work
- ❖ Perform Activities that are Particularly Valued by State Officials
- ❖ Offer Lasting Value to Students and Opportunities to Investigators on Campus
- ❖ Are Central to the Public Service Mission and Continued Support of the University
- ❖ Need More and Meaningful Relationships with a Variety of Academic Units
- ❖ Hold the Promise of Continued Growth and Exciting Collaborations

